

# MORE EFFICIENT MARK POSITIONING AND INSPECTION

## IZONIT™ LASER VISION



### ACCURATELY AND EASILY ESTABLISH AND VIEW MARK POSITIONING

SET MARK LOCATION WHEN OBJECT TO BE MARKED IS NOT VISIBLE

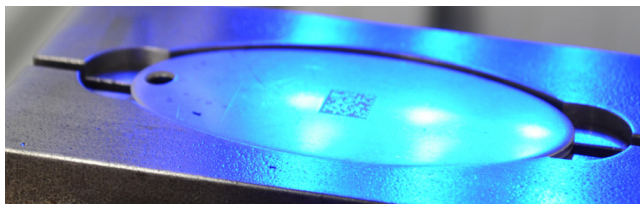
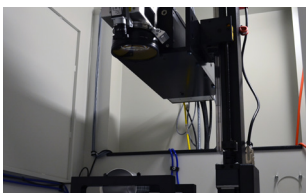
- DIAL INDEXING TABLE ENCLOSURES
- CLASS 1 SAFETY WORKSTATIONS
- REMOTE MARKING OPERATIONS

SAVE TIME AND INCREASE PRODUCTIVITY DURING PATTERN DESIGN WITH CAMERA-ASSISTED MARK POSITIONING SYSTEM (CAMPS)

INCREASE THROUGHPUT—ESPECIALLY WITH MARKING APPLICATIONS THAT INVOLVE MULTIPLE PARTS OR A VARIETY OF PARTS

IMMEDIATELY VERIFY AND VALIDATE DATA MATRIX 2D CODES

EFFICIENT DUAL FUNCTIONALITY IN ONE VISION SYSTEM



GLOBAL SALES & SERVICE  
800.654.5696  
SALES@TELESISTECH.COM



# MORE EFFICIENT MARK POSITIONING AND INSPECTION

## IZONIT™ LASER VISION

---

### AVAILABLE NOW WITH CURRENT SYSTEM MODELS OF THESE LASER MARKER SYSTEMS:

- SINGLE-HEAD F-SERIES LASER MARKER SYSTEMS RUNNING MERLIN II LS SOFTWARE
- EV15DS - INFRARED (1064 NM) LASER SYSTEM
- EV40 - INFRARED (1064 NM) LASER SYSTEM
- EVCDS (PREMIUM ONLY) - INFRARED (1064 NM) LASER SYSTEM
- EV4GDS - GREEN (532 NM) LASER SYSTEM
- UVC - ULTRAVIOLET (355 NM) LASER SYSTEM
- UV/ONE (COMING SOON) - ULTRAVIOLET (355 NM) ALL-IN-ONE LASER SYSTEM
- C010B
- C030AP

---

### SOFTWARE

TELESIS MERLIN® II LS

800.654.5696  
SALES@TELESISTECH.COM  
TELESIS.COM

